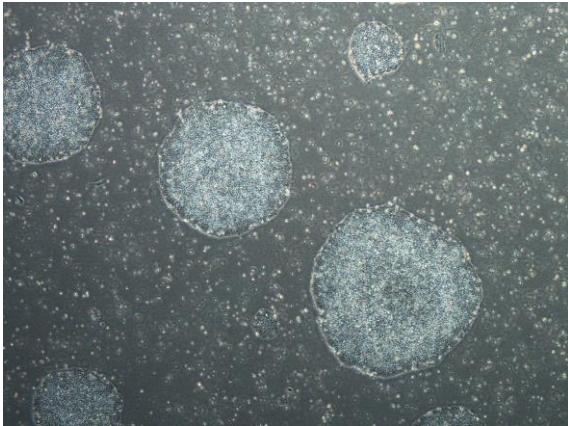
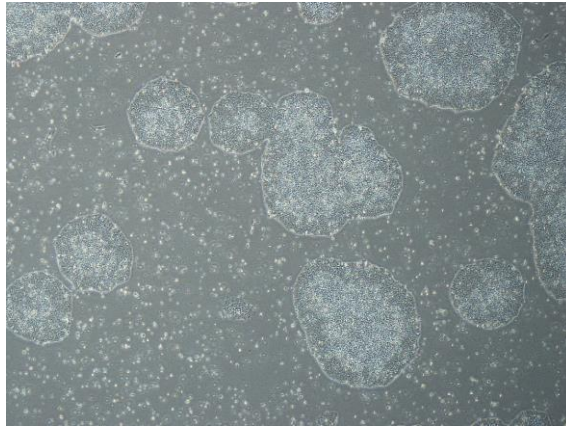


【 CiRA-j-1092 】 Morphology of iPSC colonies

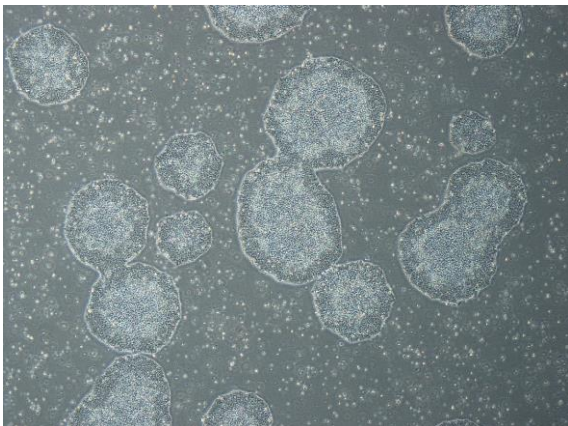
CiRA-j-1092-A: passage-3



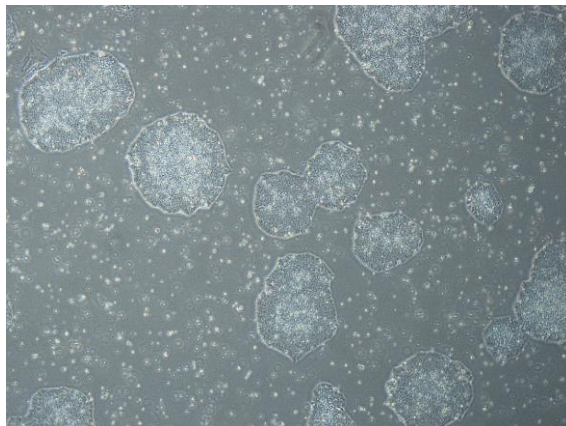
CiRA-j-1092-B: passage-3



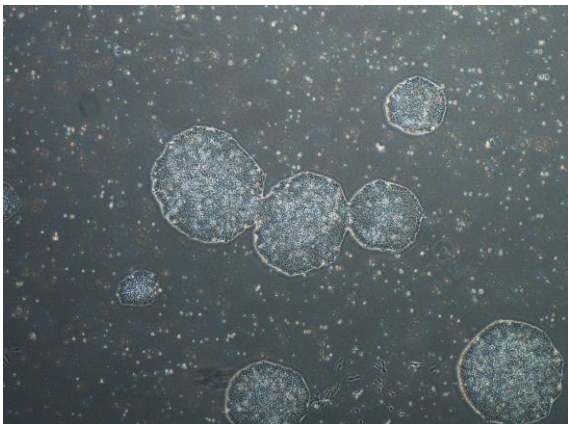
CiRA-j-1092-C: passage-3



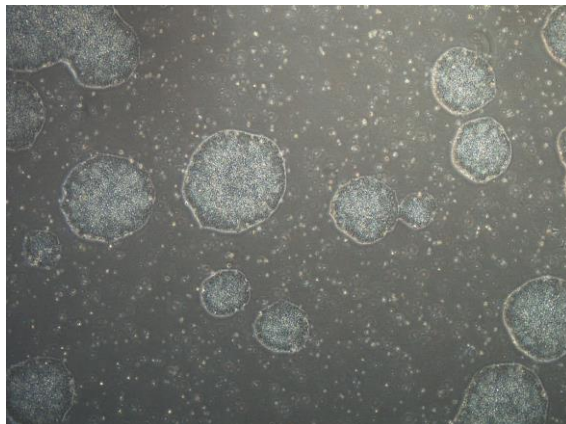
CiRA-j-1092-D: passage-3



CiRA-j-1092-E: passage-3



CiRA-j-1092-F: passage-3



(All images were captured at 4x magnification)